

## COMMODITY PRICE DASHBOARD No 9 - February 2013 edition

This price dashboard provides a monthly summary of commodity price data for the most representative agricultural products and consumer food prices, at EU and world level. Although not all the products are comparable at both EU and world level, this document is intended to give an indication on the most recent price developments.

Date of publication: 21.03.2013

### PRICES IN ABSOLUTE TERMS – FEBRUARY 2013

Agricultural Commodity	EUROPEAN UNION 27				Unit	WORLD		
	Unit	Monthly average	Annual change	Monthly change		Monthly average	Annual change	Monthly change
<b>CEREALS</b>								
Soft wheat	€/T	251	24.2%	-1.5%	US\$/T (US HRWW)	337	13.3%	-3.1%
					US\$/T (US SRWW)	304	15.3%	-2.2%
Durum wheat	€/T	278	-0.8%	-0.7%				
Maize	€/T	232	18.6%	-2.1%	US\$/T	304	9.2%	0.6%
Barley	€/T	231	15.5%	-2.4%	US\$/T	315	14.4%	0.0%
<b>MEAT</b>								
Beef	€/100 kg cw	394	3.4%	-0.7%	US\$/100 kg	428	0.1%	-0.6%
Pork	€/100 kg cw	171	8.3%	0.7%	US\$/100 kg cw	188	0.0%	4.1%
Poultry	€/100 kg cw	192	3.9%	-1.4%	US\$/100 kg	221	9.9%	1.1%
<b>DAIRY</b>								
Butter	€/T	3 330	-4.8%	-0.3%	US\$/T	3 450	-9.8%	3.8%
Cheese	€/T	3 242	-2.1%	-2.0%	US\$/T	4 000	-0.5%	0.0%
SMP	€/T	2 642	14.4%	0.5%	US\$/T	3 513	5.7%	1.8%
WMP	€/T	2 974	3.4%	0.0%	US\$/T	3 425	-3.9%	2.6%
<b>OILSEEDS</b>								
Soybean					US\$/T	596	16.4%	0.7%
Rapeseed	US\$/T	641	3.7%	2.1%				
<b>SUGAR<sup>1</sup></b>								
White sugar	€/T	738	8.1%	1.9%	US\$/T	499	-22.5%	-0.6%
<b>RICE (milled)</b>								
Japonica	€/T	569	-3.4%	0.6%	US\$/T	700	3.7%	-5.4%
Indica	€/T	580	-4.1%	0.0%	US\$/T	555	3.5%	-0.4%

<sup>1</sup> Latest EU sugar price refers to January 2013

## FOOD PRICE INDICES – FEBRUARY 2013

EU consumer food prices	Unit	Monthly average	Annual change	Monthly change
<b>FOOD</b>	index	125	2.9%	0.1%
Bread and cereals	2005=100	130	2.0%	0.2%
Meat	2005=100	123	3.4%	0.0%
Milk, cheese and eggs	2005=100	124	1.3%	0.0%
Fats and oils	2005=100	129	2.7%	0.5%
Sugar	2005=100	125	2.2%	0.1%

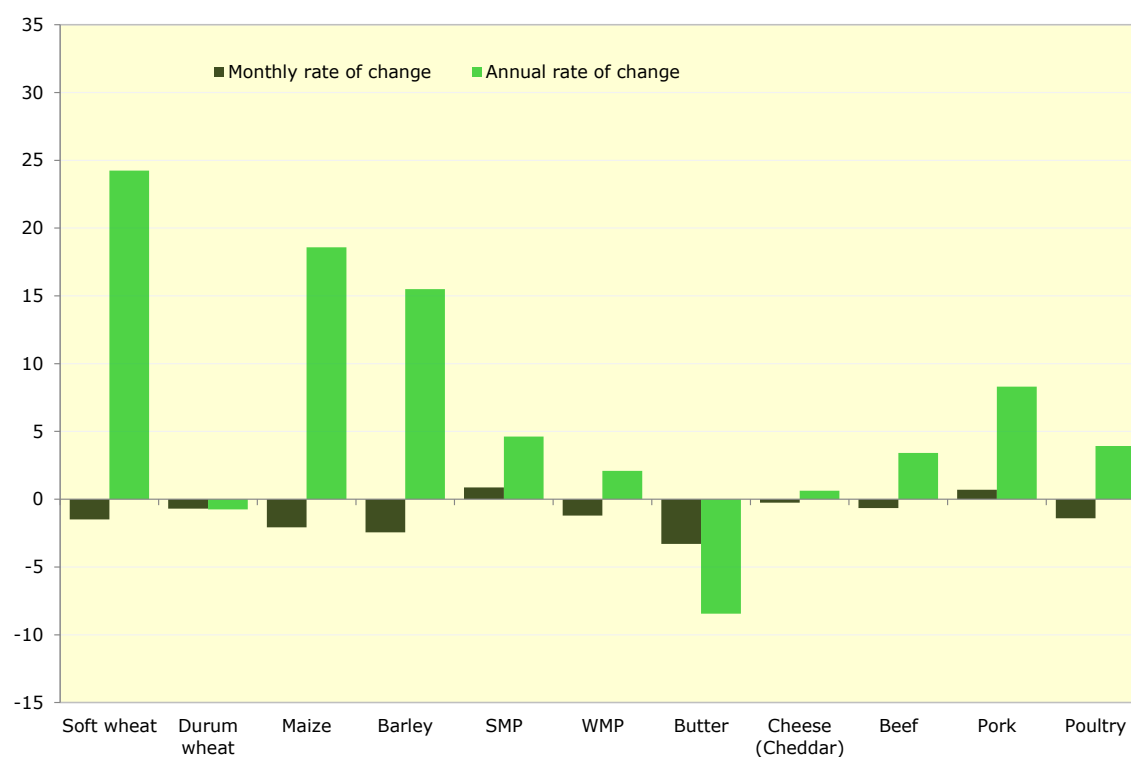
FAO food prices	Unit	Monthly average	Annual change	Monthly change
<b>FOOD</b>	index	210	-2.5%	-0.1%
Cereals	2002-2004=100	245	8.4%	-0.8%
Meat	2002-2004=100	178	-0.3%	0.0%
Dairy	2002-2004=100	203	0.5%	2.4%
Fats and oils	2002-2004=100	206	-13.7%	0.4%
Sugar	2002-2004=100	259	-24.3%	-3.2%

World Bank commodity prices	Unit	Monthly average	Annual change	Monthly change
<b>FOOD</b>	index	205	0.8%	-0.2%
Fats and oils	2005=100	218	1.1%	0.5%
Grains	2005=100	247	8.9%	-1.3%
Other food	2005=100	150	-9.8%	0.1%

*Please refer to Annex 1 and 2 for detailed data and graphs on EU price developments (for agricultural commodities and food) and commodity world quotations, as well as a description of the data used.*

## Agricultural commodity prices

**Chart 1 Monthly and annual changes in agricultural commodity prices in EU 27 (% , February 2013 compared to February 2012 and to January 2013)**



**Table 1 Monthly changes in EU agricultural commodity prices (% , February 2013 compared to January 2013)**

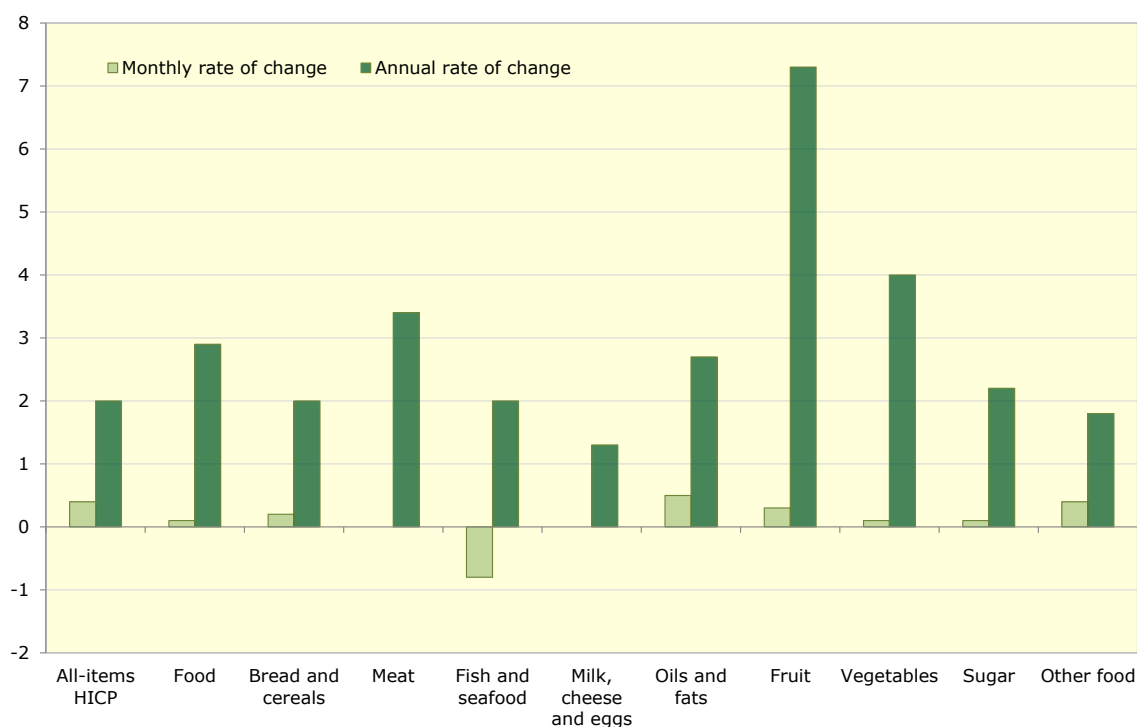
	Soft wheat	Durum wheat	Maize	Barley	SMP	WMP	Butter	Cheese (Cheddar)	Beef	Pork	Poultry
<b>European Union 27</b>	<b>-1.5</b>	<b>-0.7</b>	<b>-2.1</b>	<b>-2.4</b>	<b>0.5</b>	<b>0.0</b>	<b>-0.3</b>	<b>-2.0</b>	<b>-0.7</b>	<b>0.7</b>	<b>-1.4</b>
Austria	-2.0	-3.3	-5.1	-0.7					0.0	1.4	1.0
Belgium	-4.2		-6.5	-5.9	-0.8	0.2	-0.4		0.0	0.4	0.3
Bulgaria	-2.1		-1.4	6.2						0.3	0.9
Cyprus		0.0		0.3						5.7	0.1
Czech Republic	1.7		-0.1	5.0	4.0	1.3	-0.1		0.1	-3.3	0.1
Germany	-1.4		-3.5	-3.0	-1.2	0.7	0.3		-1.6	1.0	0.0
Denmark	-0.5			-1.3					-1.0	-2.0	-4.3
Estonia	-0.9			2.4					0.5	-1.3	3.4
Spain	-2.7	-3.4	-2.7	-2.7			0.4		-0.3	4.8	-4.1
Finland	-1.1			-0.5					1.2	0.8	1.0
France	-2.9	-3.9	-5.7	-3.9					0.4	0.1	0.0
Greece	0.0	0.2	2.4	0.0					-1.5	-1.8	0.1
Hungary	0.4		-1.1	-2.7						0.9	0.4
Ireland				-2.3	-1.6	-1.1	-2.6	2.8	-0.4	-0.7	0.0
Italy	-3.9	-0.4	-3.0	-2.9			0.0		-1.4	2.1	-5.8
Lithuania	2.3		-2.5	-4.5					3.6	-4.1	0.5
Luxembourg									-0.6	0.0	
Latvia	1.6			5.1	2.6		-1.3		-3.6	-2.9	-4.3
Malta										0.0	0.0
Netherlands			-5.0	-4.7	-1.3	-0.5	-0.2		-0.5	0.4	1.2
Poland	-1.9		-1.0	-2.8	1.2	-0.3	-2.3		-2.1	0.3	3.6
Portugal			-1.2	-3.0		-1.4	-3.7		0.4	2.5	-7.3
Romania	0.1		6.1	-3.5					0.0	-6.9	-1.4
Sweden	-1.6			-1.0					4.5	1.1	-1.6
Slovenia	-0.7		-1.7						-1.8	-2.2	-2.7
Slovakia	1.4		3.0	4.5	5.4	3.6	-2.5		2.8	-2.6	0.1
United Kingdom	-7.2			-5.9	-4.3		2.2	-3.7	-2.7	-5.2	-2.5

**Table 2 Annual changes in EU agricultural commodity prices (% , February 2013 compared to February 2012)**

	Soft wheat	Durum wheat	Maize	Barley	SMP	WMP	Butter	Cheese (Cheddar)	Beef	Pork	Poultry
<b>European Union 27</b>	<b>24.2</b>	<b>-0.8</b>	<b>18.6</b>	<b>15.5</b>	<b>14.4</b>	<b>3.4</b>	<b>-4.8</b>	<b>-2.1</b>	<b>3.4</b>	<b>8.3</b>	<b>3.9</b>
Austria	28.4	-6.5	30.0	22.2					5.3	4.8	3.1
Belgium	17.6		10.9	7.0	17.7	2.9	1.2		7.9	2.0	10.3
Bulgaria	39.1		24.4	24.6						17.8	17.0
Cyprus		-1.7		13.5						18.8	3.6
Czech Republic	42.5		35.1	28.8	10.7	0.6	-2.3		0.7	0.4	14.7
Germany	27.8		16.7	13.0	16.7	11.3	2.2		6.3	5.4	1.9
Denmark	20.6			10.9					1.8	10.8	-7.4
Estonia	19.5			12.2						7.1	15.2
Spain	19.2	-1.0	10.9	16.5			-4.8		3.3	19.7	7.1
Finland	25.7			23.5					10.5	17.1	6.0
France	14.9	-2.8	9.4	6.9					1.9	0.0	2.2
Greece		7.2	26.5						0.2	14.0	2.3
Hungary	24.1		26.9	25.5						3.6	9.2
Ireland				28.8	18.0	-1.3	-4.8	-0.5	3.4	15.1	0.0
Italy	18.4	-0.6	15.9	11.5			0.7		5.3	12.9	2.5
Lithuania	28.7		10.7	11.5					2.8	0.9	0.9
Luxembourg									8.6	3.4	
Latvia	19.2			25.6	14.5	10.6	-8.3		2.2	1.1	1.1
Malta										25.4	9.9
Netherlands			6.5	6.9	19.3	5.8	2.7		3.8	3.7	7.9
Poland	25.7		20.1	11.1	14.3	-0.5	-2.2		-4.1	0.0	-0.7
Portugal			9.4	11.4		-1.4	0.1		0.0	13.7	-0.3
Romania	40.5		32.9	34.9					7.7	13.9	20.5
Sweden	17.2			16.4					8.9	20.5	12.6
Slovenia	23.6		42.3						5.3	1.4	3.7
Slovakia	33.8		41.4	28.5	21.4	0.8	-6.7		7.5	2.8	11.2
United Kingdom	30.7			11.2	6.2		-10.2	-2.5	5.1	8.7	0.2

## Food consumer prices

**Chart 2 Monthly and annual changes in food consumer prices in EU 27 (% , February 2013 compared to February 2012 and to January 2013)**



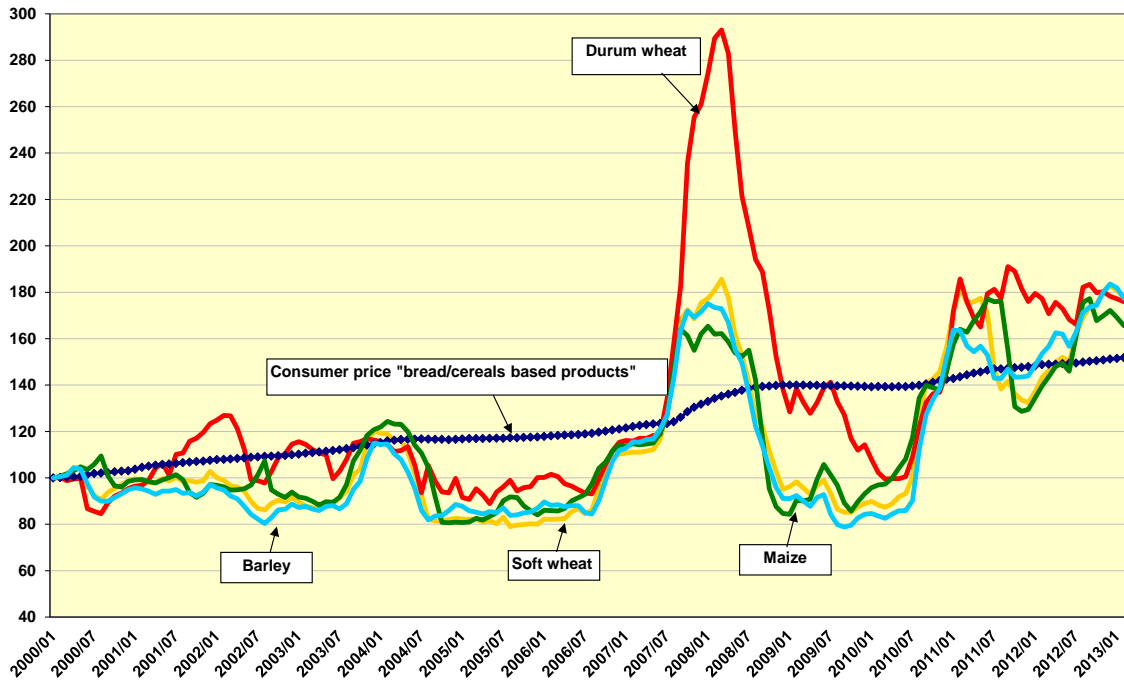
**Table 3 Monthly changes in EU consumer prices for food (% , February 2013 compared to January 2013)**

	All-items HICP	Food	Bread and cereals	Meat	Fish and seafood	Milk, cheese and eggs	Oils and fats	Fruit	Vegetables	Sugar	Other food
European Union 27	0.4	0.1	0.2	0.0	-0.8	0.0	0.5	0.3	0.1	0.1	0.4
Belgium	2.2	0.7	0.5	0.7	-0.3	0.5	1.1	5.3	-1.3	0.2	0.8
Bulgaria	0.2	-0.1	0.1	-0.3	0.0	-0.4	-0.8	-0.4	0.7	-0.7	0.4
Czech Republic	0.1	-0.5	-0.9	0.5	-1.5	-0.5	0.4	-5.3	2.7	-2.0	0.6
Denmark	1.0	-0.4	-0.4	0.5	-0.4	-1.2	-1.6	-1.3	-1.1	0.2	0.8
Germany	0.8	-0.1	0.3	-0.1	-1.5	0.3	1.0	-0.9	-0.3	0.2	0.5
Estonia	0.7	1.2	0.4	1.3	1.5	1.9	1.8	2.1	0.0	0.9	2.5
Ireland	0.8	-0.3	-0.1	0.2	-3.6	0.8	0.5	-0.6	-0.5	-1.9	-0.4
Greece	-1.6	-0.1	0.3	-0.8	-0.2	0.1	-0.1	0.0	0.9	0.1	-0.2
Spain	0.1	-0.3	0.2	-0.5	-1.6	0.0	0.8	-0.1	0.0	0.1	0.0
France	0.3	0.0	-0.1	0.3	-1.2	-0.2	-0.4	2.4	-0.4	-0.2	0.0
Italy	-0.2	0.0	0.2	-0.1	0.4	-0.2	0.9	0.6	-0.9	0.2	0.1
Cyprus	0.2	-0.8	-0.2	0.4	-0.8	0.6	-1.2	-0.1	-8.2	0.2	0.4
Latvia	-0.1	-0.3	0.3	-1.0	-0.6	-0.5	-1.0	0.3	1.3	-0.3	-0.7
Lithuania	-0.1	0.2	0.6	-0.3	0.6	0.0	-0.4	1.3	1.0	-0.1	-0.2
Luxembourg	1.9	0.4	0.8	1.0	-0.4	-0.1	1.5	2.5	-1.0	-0.8	-0.3
Hungary	0.6	-0.1	-0.3	-0.4	0.8	-0.8	-1.2	1.2	2.2	-0.6	-0.6
Malta	0.0	0.5	0.3	0.5	1.1	0.1	-0.5	2.0	-0.2	0.8	0.1
Netherlands	1.0	1.4	1.1	0.2	0.3	0.7	2.9	3.2	2.6	2.0	1.9
Austria	0.3	0.1	0.6	0.5	-0.9	0.6	0.4	0.2	-1.9	0.4	-0.9
Poland	0.0	-0.1	0.1	-0.8	0.1	0.2	-0.1	0.7	0.1	-0.6	0.5
Portugal	-0.1	-0.2	0.1	-0.3	-1.4	0.0	0.5	0.4	0.4	-0.3	0.2
Romania	0.4	0.4	0.1	0.2	0.4	-0.8	-0.5	0.6	3.0	0.0	0.1
Slovenia	0.7	-0.3	-0.4	1.3	1.9	-0.1	-0.4	-0.5	-3.7	-0.6	0.2
Slovakia	0.0	0.0	-0.1	-1.0	0.2	-0.4	0.1	2.4	3.8	0.0	-0.6
Finland	0.6	2.5	3.3	2.9	2.3	4.3	0.4	1.1	0.8	1.1	0.0
Sweden	0.6	0.4	0.6	0.1	1.1	0.8	0.8	-0.7	0.9	0.1	-0.3
United Kingdom	:	:	:	:	:	:	:	:	:	:	:

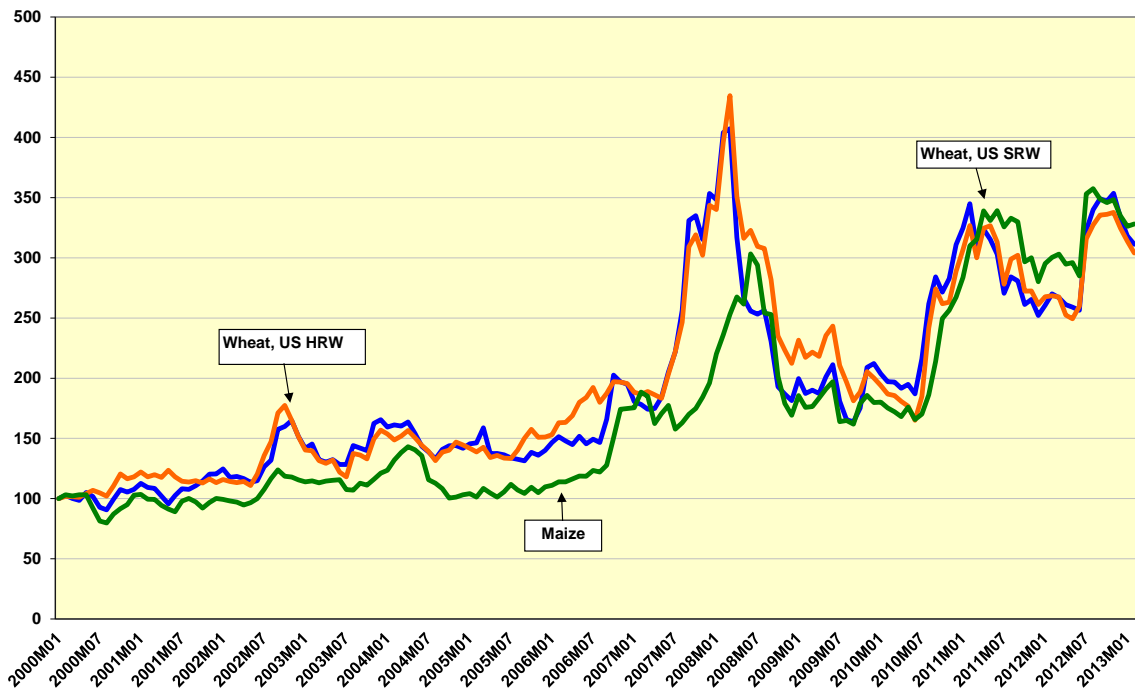
**Table 4 Annual changes in EU consumer prices for food (% , February 2013 compared to February 2012)**

	All-items HICP	Food	Bread and cereals	Meat	Fish and seafood	Milk, cheese and eggs	Oils and fats	Fruit	Vegetables	Sugar	Other food
European Union 27	2.0	2.9	2.0	3.4	2.0	1.3	2.7	7.3	4.0	2.2	1.8
Belgium	1.3	3.5	3.0	3.6	2.4	1.9	1.4	14.3	-0.3	4.3	2.6
Bulgaria	2.2	5.2	4.2	7.5	1.9	2.8	5.2	0.9	12.5	-2.7	1.8
Czech Republic	1.8	5.2	1.7	7.2	8.7	2.4	-0.8	8.0	13.2	1.3	4.1
Denmark	1.0	1.6	1.3	2.0	1.5	-1.0	-7.0	0.5	5.2	4.3	3.1
Germany	1.8	3.1	2.8	4.9	3.2	2.0	-2.3	7.1	-0.2	2.7	1.6
Estonia	4.0	6.3	2.0	7.5	6.7	5.9	3.8	16.7	11.1	1.5	3.9
Ireland	1.2	1.8	0.3	2.1	3.4	-0.1	0.1	2.2	7.1	0.8	0.6
Greece	0.1	0.4	-1.9	1.6	0.3	0.6	-0.1	-2.5	3.1	-0.9	-2.2
Spain	2.9	2.9	1.5	2.8	2.3	1.2	19.1	5.3	2.5	1.6	2.0
France	1.2	1.6	0.7	2.7	2.5	-1.0	-1.0	10.6	0.2	0.1	-0.1
Italy	2.0	2.4	2.0	1.9	1.4	1.2	2.3	7.1	2.5	2.7	1.9
Cyprus	1.8	1.6	0.3	2.5	3.5	14.3	2.6	-6.3	-6.4	1.1	2.4
Latvia	0.3	2.1	2.1	1.2	1.9	2.6	-0.1	3.8	5.2	-0.3	0.4
Lithuania	2.3	2.9	2.5	3.6	4.4	1.8	-3.3	5.4	8.8	-0.4	1.5
Luxembourg	2.4	3.7	3.4	4.4	5.8	1.6	5.2	7.5	3.1	3.0	1.0
Hungary	2.9	4.5	3.8	6.3	6.7	-1.4	6.9	6.6	18.1	-2.9	4.3
Malta	1.8	5.0	4.0	7.8	10.1	4.2	-0.7	9.7	-3.3	8.1	3.3
Netherlands	3.2	2.7	2.3	2.7	1.5	1.2	-0.5	9.9	2.7	1.4	2.6
Austria	2.6	3.8	3.5	7.0	5.7	1.2	0.9	2.5	3.8	3.2	0.9
Poland	1.2	2.7	1.9	2.7	1.6	3.9	0.0	1.5	5.6	0.8	4.7
Portugal	0.2	2.2	1.6	2.1	-3.4	1.9	6.5	9.2	9.2	2.0	0.6
Romania	4.8	7.4	2.6	5.5	3.3	3.1	9.9	12.1	25.7	2.3	1.9
Slovenia	2.9	4.7	1.9	6.3	3.2	0.6	0.8	12.0	11.7	2.3	2.7
Slovakia	2.2	5.7	1.7	8.0	6.6	4.6	2.0	13.4	15.0	1.5	2.7
Finland	2.5	7.0	4.6	10.2	10.5	6.3	1.2	18.1	2.2	3.5	0.4
Sweden	0.5	2.1	0.1	3.1	4.2	3.4	4.1	4.8	-0.5	1.3	1.4
United Kingdom	:	:	:	:	:	:	:	:	:	:	:

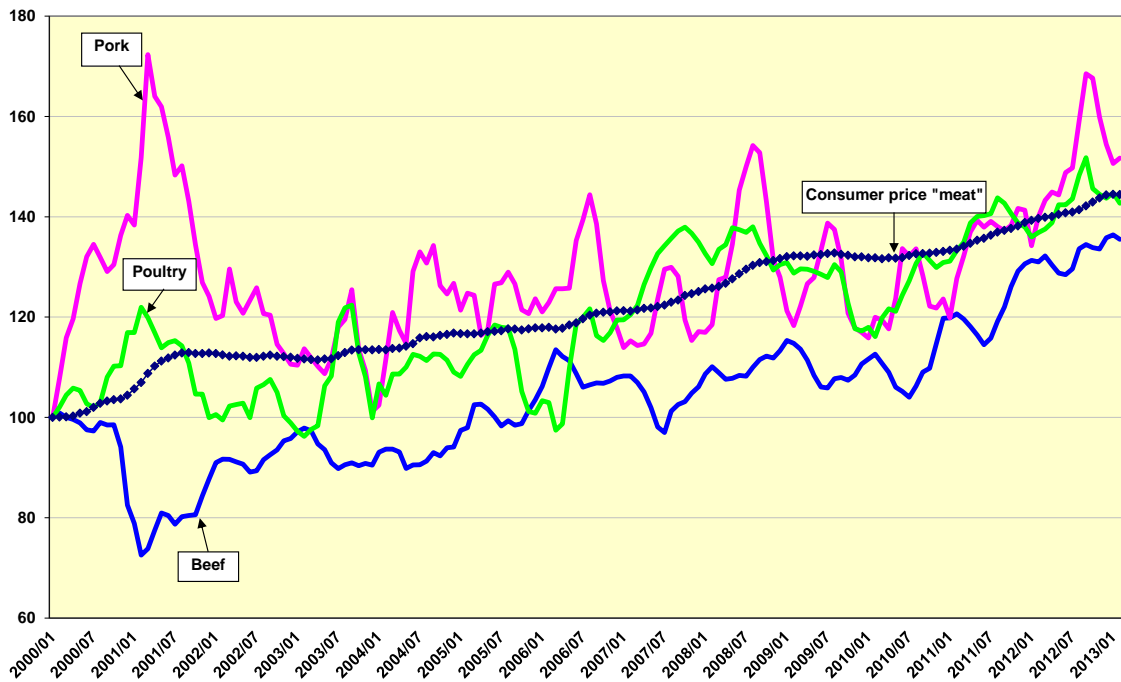
**Chart 3 Cereals/bread and cereals based products: EU agricultural market and consumer price developments (January 2000 until February 2013, Jan2000=100)**



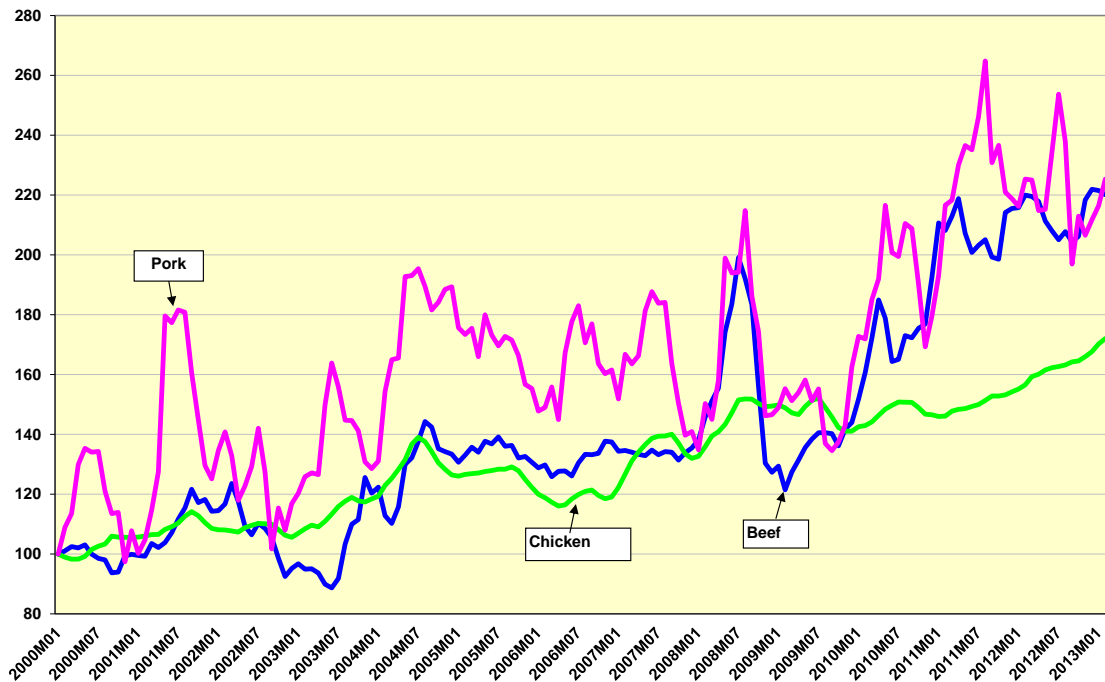
**Chart 4 Cereals: international price developments (January 2000 until February 2013, Jan2000=100)**



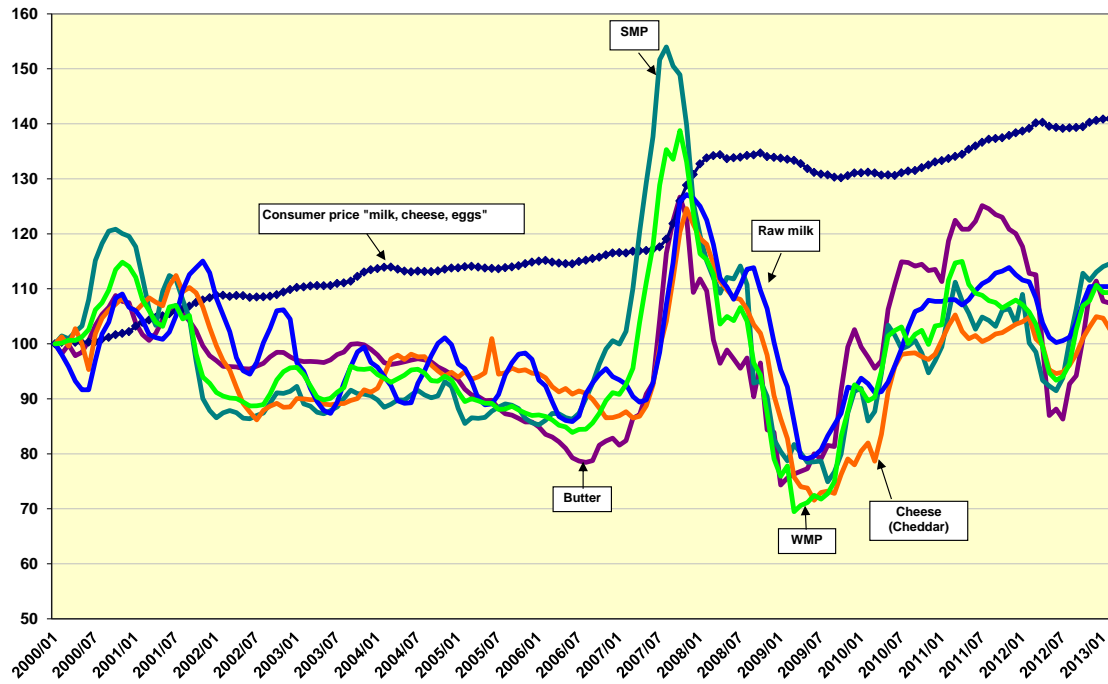
**Chart 5 Meat: EU agricultural market and consumer price developments (January 2000 until February 2013, Jan2000=100)**



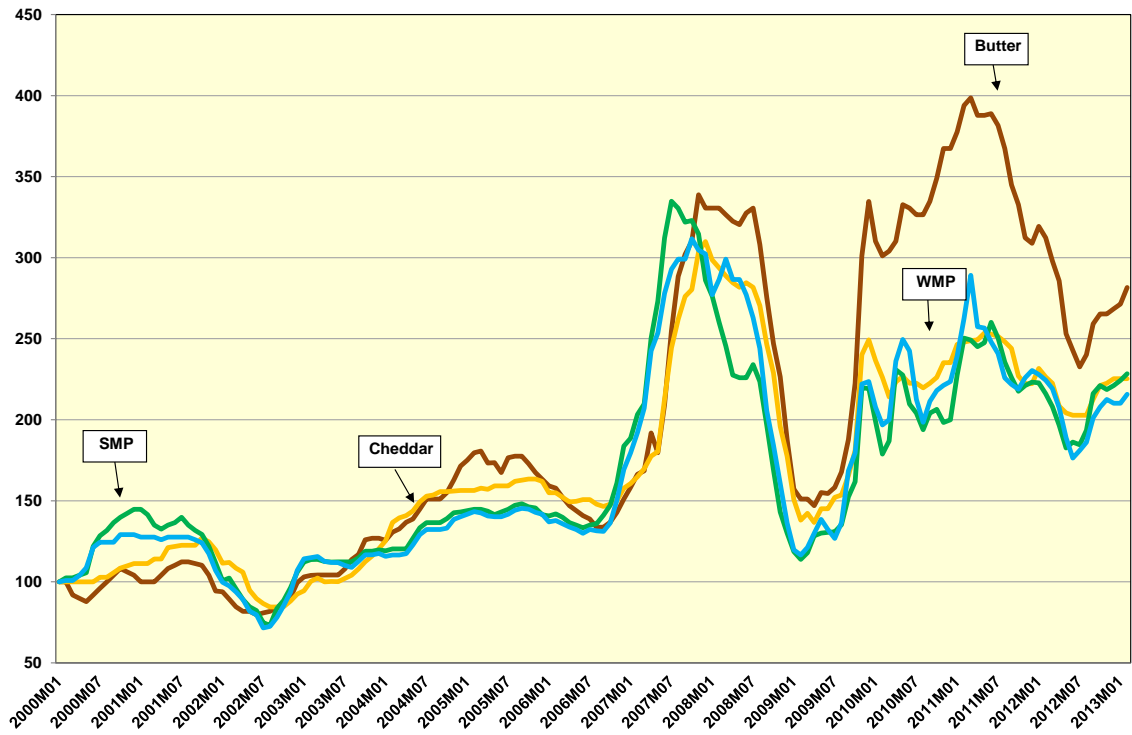
**Chart 6 Meat: international price developments (January 2000 until February 2013, Jan2000=100)**



**Chart 7 Dairy: EU agricultural market and consumer price developments (January 2000 until February 2013, Jan2000=100)**



**Chart 8 Dairy: international price developments (January 2000 until February 2013, Jan2000=100)**





## Description of the price series used

### PRICES IN ABSOLUTE TERMS

#### European Union

A monthly average of absolute prices for cereals, meat and dairy products (including their description) is published and available on the internet at:

[http://ec.europa.eu/agriculture/markets/prices/monthly\\_en.pdf](http://ec.europa.eu/agriculture/markets/prices/monthly_en.pdf)

Rice – Japonica Spain and Indica Italy (DG AGRI data based on weekly MS communications)

Sugar – white sugar (DG AGRI data based on prices communicated by EU sugar producers and refiners)

Rapeseed – CIF Hamburg, Europe "00" (USDA, OilWorld)

Sources: DG AGRI (Agriview data warehouse and data communicated by Member States to DG AGRI) and USDA Report on Oilseeds: World, markets and trade available at [http://www.fas.usda.gov/oilseeds\\_arc.asp](http://www.fas.usda.gov/oilseeds_arc.asp)

#### World

Wheat - US No.2, Hard Red Winter ord. Prot, US Fob Gulf (International Grain Council) and US No.2, Soft Red Winter Wheat , US Gulf (USDA)

Barley - Black Sea Feed fob (International Grain Council)

Maize - US no 2 Yellow Corn, export price fob Gulf (USDA)

Soybeans (US), c.i.f. Rotterdam (USDA, OilWorld and World Bank)

Beef meat – Meat, beef (Australia/New Zealand), chucks and cow forequarters, frozen boneless, 85% chemical lean, c.i.f. U.S. port (East Coast), ex-dock, beginning November 2002; previously cow forequarters (World Bank)

Poultry meat - Meat, chicken (US), broiler/fryer, whole birds, 2-1/2 to 3 pounds, USDA grade "A", ice-packed, Georgia Dock preliminary weighted average, wholesale (World Bank)

Pigmeat – DG AGRI calculation based on USDA weekly quotations for US lean hog carcass 167-187 lb. Iowa Minnesota

Butter - Oceania, indicative export prices, f.o.b. (Average of mid-point of price ranges reported bi-weekly by Dairy Market News, USDA)

Cheddar Oceania, indicative export prices, f.o.b. (Average of mid-point of price ranges reported bi-weekly by Dairy Market News, USDA)

SMP Oceania, indicative export prices, f.o.b. (Average of mid-point of price ranges reported bi-weekly by Dairy Market News, USDA)

WMP Oceania, indicative export prices, f.o.b. (Average of mid-point of price ranges reported bi-weekly by Dairy Market News, USDA)

Rice – Japonica US Medium California 4% and Indica Thai 100% B ("Creed market report"), simple average of weekly quotations

Sugar – London white sugar 05, nearby (closing), average of daily quotations (DG AGRI, AMIS database)

Sources for world prices: World Bank (Commodity Price Data, Pink Sheet), FAO, USDA (incl. OilWorld)

<http://www.fao.org/economic/est/prices?lang=en>

[http://www.fas.usda.gov/oilseeds\\_arc.asp](http://www.fas.usda.gov/oilseeds_arc.asp)

<http://go.worldbank.org/2O4NGVQC00>

### FOOD PRICE INDICES

#### 1. EU consumer food price indices

The EU consumer food price index measures the change over time of the prices of consumer goods and services acquired by households. The food products included in this index are those purchased for consumption at home and include the following categories: bread and cereals, meat, dairy, meat, fish, milk, cheese and eggs, oils and fats, fruits, vegetables, sugar, jam, honey, chocolate and confectionery and other food products (ex. salt, condiments and spices, baby food, etc.).

A detailed description of its composition can be found on Eurostat website at:

[http://ec.europa.eu/eurostat/ramon/nomenclatures/index.cfm?TargetUrl=ACT\\_OTH\\_CLS\\_DLD&StrNom=HICP\\_2000&StrFormat=HTML&StrLanguageCode=EN&IntKey=22470387](http://ec.europa.eu/eurostat/ramon/nomenclatures/index.cfm?TargetUrl=ACT_OTH_CLS_DLD&StrNom=HICP_2000&StrFormat=HTML&StrLanguageCode=EN&IntKey=22470387)

#### 2. FAO food price index

The FAO Food Price Index is a measure of the monthly change in international prices of a basket of food commodities. It consists of the average of five commodity group price indices (representing 55 quotations), weighted with the average export shares of each of the groups for 2002-2004.

A detailed description of its composition can be found at:

<http://www.fao.org/worldfoodsituation/wfs-home/foodpricesindex/en/>

#### 3. World Bank food price index

The World Bank calculates commodity price indices for low and middle income countries (2005=100, 2002-2004 export value weights). The food index includes fats and oils, grains and other food (meat, sugar, etc) items.

A detailed description of its composition can be found at:

<http://econ.worldbank.org/WBSITE/EXTERNAL/EXTDEC/EXTDECPROSPECTS/0,,contentMDK:21574907~menuPK:7859231~pagePK:64165401~piPK:64165026~theSitePK:476883,00.html>